

---

# **PAINTINGS OF 3T VAKIL 2024-2025**

---

***Spandrel Spaces-The Art of In-Between***



# Spandrel Spaces-The Art of In-Between

# 3t Vakil Paintings 2024-2025

All paintings in this series:

Medium: Acrylic Paint on PVC Panel, Size: 44" x 20" Price: USD \$1,600

(hand-made mahogany frame plus \$400) Whatsapp: +17873297761 Email: 3t@3tvakil.com

[www.3tvakil.com](http://www.3tvakil.com)

## 1. *Azureomycelium sporomorphix*



Veiled in ultramarine, "*Azureomycelium sporomorphix*" is an odyssey into the sublime intricacy of chaos and cosmos. The deepest blues of twilight blend with lighter hues that glimmer like stars, guiding the eye through a microcosm mirroring the celestial. Root-like formations stretch out in a delicate dance, a ballet of botanical neurons firing across the void. This painting captures the unseen rhythms of nature and the quiet heartbeat of its hidden mechanisms.

## 2. *Vespertine cryptica*



Beneath the cloak of twilight, "*Vespertine cryptica*" emerges as a symphony in shadow and mystery. Violet tones and inky depths conjure a nocturnal garden where unseen life stirs. Each brushstroke unfurls like a moonlit petal, bioluminescent and strange, echoing nature's hidden rhythms. The chaos is purposeful—an intricate disarray that mirrors the secret choreography of the night. The texture becomes sound: fern brushing razor grass, the hush of wind threading through undergrowth. This is not mere image but incantation—each mark a verse in an arcane, whispered poem. The painting invites you to wander through dusk's tangled sanctuary, where life blooms quietly beneath veiled skies.



3. ***Luminomycedes nocturnalis***



In the hushed gloaming of "*Luminomycedes nocturnalis*" is a living organism where every line is a whispering filament of mycelium. Stretching across a moonlit earth, these filaments caress a night field under a lunar sky, where the most cryptic forms of life gently stir. Tendrils of green and hints of spectral light curl and intertwine. This visual symphony sings of subterranean networks binding the forest floor, of fungal constellations drawing maps in the soil with their spore-scented breath. It is a phantasmagoria of growth and connection, echoing the unseen dance of roots and earth, the sacred commune of plant and fungus in silent reciprocity, and the emergence of life from the embrace of night.

4. ***Chromaphyllum foliospectra***



"*Chromaphyllum foliospectra*" unfolds like a daydream of the forest at midday. Sunlit leaves and dappled light perform an arboreal ballet, a dance of life's exuberance etched in chlorophyll and light. Yellow arches, reminiscent of midsummer warmth, intertwine with cool blues, greens and the streaks of red & pink evoke blooming flowers. This riotous ensemble casts an impression of woodland revelry, celebrating growth cycles and the joy of being. The painting sings a ballad of the spectrum seen through leaves, of shifting shadows and light play through canopies. This piece invites immersion in nature's dynamic rhythms, from flowing sap to rustling leaves.

5. ***Florafaelix petaluminaris***



"*Florafaelix petaluminaris*" blooms from the canvas in a passionate resurrection, its hues a vivid defiance against the tranquil purples of dusk. A phoenix of petals and pigment arises, scattering the embers of its rebirth across the twilight. Vibrant magentas and crimsons blaze with renewal, dancing amidst purple's noble calm. This painting echoes the heartbeat of nature, constantly reinventing itself in cycles of life, death, and rebirth. It is an anthem of resurgence, showcasing the tenacity and beauty in beginning anew. This piece whispers of nature's fiery heart, where every end sparks a new beginning, seizing the moment when life reclaims its splendor.



6. ***Hydroearth liquidorum***



"*Hydroearth liquidorum*" washes over the senses like a cascade of cool, deep waters, each stroke flowing with the grace of a stream through an ancient forest. Hues of indigo and cerulean mingle, like rivulets joining a larger current, drawn onward by the call of the sea. The intertwining lines evoke water's fluidity, its ability to adapt and find hidden crevices. There's a rhythm here, a watery heartbeat, the lifeblood of the planet. This painting conveys water's silent force, shaping stone and nurturing life. It reflects the world's rivers and oceans, the unseen energy cycling from cloud to rain to river and sea, a visual hymn to the waters that sustain and connect us.

7. ***Lumenalga serpentina***



"*Lumenalga serpentina*" captures the vitality of a sun-drenched canopy, where light filters through foliage in a dance of shadows and luminescence. Layers of azure and viridian swirl with life, cradling golden hues like sunbeams through an emerald veil. The strokes echo the rhythm of photosynthesis, turning light into life, a fleeting glimpse of a forest's breath. Amid vibrant chaos, harmony prevails, balancing light and shade, tree and sun. This painting celebrates the forest's serene commerce, where each leaf, bathed in sunlight, sustains life in a radiant exchange.

8. ***Florosophica virtutis***



"*Florosophica virtutis*" is a canvas that holds the whispers of nature's quiet wisdom. It is an intricate garden of thought, where the florals of philosophy bloom in the light of introspection, and every twist of color reveals a deeper truth. The delicate interplay of light and shadow creates a dialogue between mind and soul, a visual representation of ethical musings and the search for meaning. Beneath the cool tones and serene chaos lies a sense of searching, of reaching for understanding through the tangled branches of existence. This painting embodies the quest for wisdom, inviting each viewer to meander through its paths, pondering life's enduring mysteries.



9. ***Intellectiflora cognoscens***



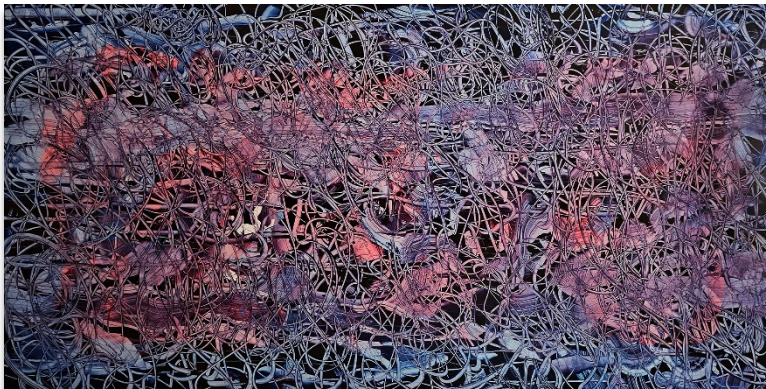
"*Intellectiflora cognoscens*" unfurls across the canvas as a maelstrom of thought, a wild garden of intellect where ideas blossom in vibrant pinks and notions take root in profound blues. It is a cerebral landscape, alive with the electricity of contemplation and the rush of realization. Riotous swirls resemble synapses firing, cognitive fervor. Amidst the cool whispers of reason, hot pinks shout of passion, igniting the mind with sudden clarity. This is where thought becomes visible, where the abstract becomes concrete, an entwining of petal and neuron. The painting captures the essence of inquiry, the beautiful chaos of the thinking process, and the blossoming of understanding that follows the entanglement of reflection.

10. ***Xyletherium aquafluentum***



"*Xyletherium aquafluentum*" stretches across the canvas like the memory of a midnight forest bathed in moonlight, where every shade of blue whispers the secrets of the woods at rest. The interweaving of color and line mimics the flow of water through land, a silent current that nourishes and binds. Soft indigos and pale azures evoke a serene nocturne, a world submerged under the still surface of a deep, tranquil pool. It is a place of quietude and reflection, where the heart can hear the murmurs of the xylem, the lifeblood of the trees, flowing onward. This painting suggests the delicate balance of nature, the unending cycle of absorption and release.

11. ***Psychophyta mentis***



"*Psychophyta mentis*" is a sprawling canvas where the mind's flora takes root in contemplative purples and pinks, an orchard of cognition blooming in the twilight of thought. Interlacing forms and hues capture the tangled intricacies of the psyche, where thoughts grow wild and free like brambles of the deepest woods. Amid this thicket of introspection, vibrant pinks burst like understanding within the tranquil expanse of the subconscious. These blossoms of awareness flower in the rich soil of contemplation, each petal a revelation unfurling against the night sky of the mind. This painting celebrates the cerebral wilderness, where the intricate vines of thoughts intertwine, creating a network of understanding and wonder amid beautiful and bewildering mental flora.



12. *Arborascendia grandivora*



"*Arborascendia grandivora*" pulses with coiled energy—serpentine forms twist and ripple through a dreamscape of oceanic blues and teals, like deep-sea organisms or neural roots of some unnamed species. The lines arc and spiral like ancient boughs reaching skyward, their hunger for light and life palpable in every gesture. The palette evokes both sea and forest, a fusion of depth and breath, with flashes of gold and white like distant stars or sunlight glinting on leaves—brief illuminations that bridge the terrestrial and the divine. The painting honors the unnamed forces that spiral toward form in a dance of chaos, growth, and transcendence.

13. *Cogniflora navigans*



"*Cogniflora navigans*" is a sea of cerebral currents, flowing through the mind's myriad passages like an underwater waltz. Hues of sage and turquoise weave a tapestry of subconscious navigation, where thought is a meandering river. In the dappled light of cognition, golden flecks emerge like sparks amid verdant tangles of contemplation—seeds of intuition scattered across the fertile grounds of the psyche, poised to germinate in the waters of understanding. The entwined patterns mimic the mycelium of the mind, where connections form organically, guided by instinct and perception. This painting explores the intellectual underbrush, a dense thicket where ideas germinate and proliferate in abundance.

14. *Radixwhisperion terraprofundum*



In "*Radixwhisperion terraprofundum*," we hear the hidden language of the earth, where root whispers tell tales of soil and stone. Sepia tones and tawny hues map secret conversations pulsing through the underground. The myriad shades of brown speak to the earth's depth diversity, layers of history compacted into strata of pigment and pattern. Flecks of white shine like bone fragments or quartz gleams in the loam, treasures buried in the earth's dark pages. This dense forest floor, seen from below, reveals a network of organic cables binding the world in silent symbiosis. This painting is a homage to the unseen foundation of life, the rooted web anchoring towering forests and the smallest blades of grass.



15. ***Astraldendron luminarum***



"*Astraldendron luminarum*" is a cosmic dance of arboreal spirits swirling in the midnight blue sky. Electric hues of blue converge with vibrant, fiery reds, echoing the energy exchange between sky and tree, leaf and star. The canvas pulsates with the universe's rhythm, colors singing of the canopy's reach for the infinite. Arcs and whorls, liberated from earthly gravity, swirl in the cosmos, their trajectories inscribed by the music of the spheres. Amidst the celestial tangle, streaks of warm gold and crimson blaze like comets, testament to the eternal fire burning in every star and living being. This painting celebrates the cosmic connection, the intimate bond shared by all matter in the dance of existence.

16. ***Cryptobotanica mysticora***



In the heart of "*Cryptobotanica mysticora*," a hidden world unfurls, a sepia-toned sanctuary where earth's arcane secrets are inscribed upon a canvas of intertwining life. This realm of mystic flora delves into the depths of existence, with tendrils weaving spells of ancient soil. Amid earthen lines and whorls, bursts of color emerge like nature's alchemical gold, glimmering with bygone mysteries. Earth-tones whisper of old ways, life cycles, and decay, composing the symphony of the forest floor. This painting serves as a visual poem to nature's cryptic language, celebrating the hidden wisdom of the wild.

17. ***Myceluminaris noctiluminis***



Under the cloak of night, "*Myceluminaris noctiluminis*" pulses with the bioluminescent glow of forest whispers, where fungal networks illuminate the dark with their silent discourse. Swirls of deep blues and vibrant yellows intertwine, casting a dance of shadow and light that mimics the glowing paths of spores. Reds and pinks blaze across this nocturnal landscape, echoing the heartbeat of trees and the warm sap flow beneath the bark. These hues are the embers of the forest's soul, burning bright in the quiet of the night. This painting is a poetic tribute to the unseen connections in nature, celebrating the threads that connect the hidden layers beneath our feet.



18. ***Funglorendil sporale***



"*Funglorendil sporale*" unfolds as a fungal haven rich with spore-born lore. Earthy tones cradle verdant bursts, creating a sanctuary where the ground breathes and spores spin ageless stories in verdigris and umber. Tendrils of life reach across a canvas rich with the patina of time, each curve a chronicle of symbiosis. This painting captures the language of fungi, whispers of life's perpetual connection, binding the forest in a secret pact of survival. Amidst the interlacing lines and shapes, the viewer discovers the pulsing heart of the woodland, thriving in the balance of give and take. It illustrates life's unseen foundations through shadow and light, depicting cycles of decay and renewal with vibrant resilience.

19. ***Mycelisylvae arcanum***



As night descends, "*Mycelisylvae arcanum*" becomes a constellation within, where mycelial threads spin their silent tales in hues of twilight and shadow. The soft light of bioluminescent fungi etched against the dark loam of creation. A network of deep blues and purples weaves through the night, a silent undercurrent of life thriving in hidden depths. Dappled with flecks of ivory recalling the moon's gentle light through a dense canopy, this painting suggests a world alive with unseen activity. It captures the enchantment of nocturnal life, celebrating the beauty and mysteries that blossom in darkness, where the organic merges with the ethereal, connecting the forest's pulse to the stars' rhythm.

20. ***Sporiforia visionalis***



"*Sporiforia visionalis*" is a dreamscape spun from the vibrant threads of imagination, where spores of vision germinate ideas that twirl and unfurl across a canvas of possibility. Vivid hues clash and harmonize in the dance of creation, crafting a symphony of sight that resonates with the rhythm of potential. Intertwined lines flow in a kaleidoscope of purpose, manifesting thoughts into reality. Each swirl is a galaxy of its own, each color a dimension—vibrant reds pulse with passion, cool blues hum with wisdom, and purples resonate with mystery. This painting lures the mind into its complex maze, transforming abstract ideas into tangible art, an ode to the boundless landscapes within the visionary spirit.

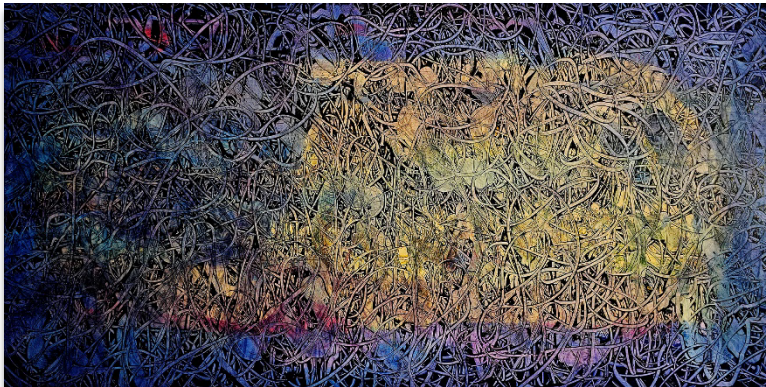


21. *Lichenluminata stellaris*



In "*Lichenluminata stellaris*," a stellar garden blooms, where the lichen of the stars spreads across the firmament in a constellation of connection. Shades of midnight and cobalt create a universe, each stroke a filament of light in the vast canopy of space. The intricate weave of lines and patterns speaks of cosmic lattices, the delicate yet resilient structures that bind the heavens in silent symbiosis. Flecks of white emerge like distant suns, each a beacon in the dark, guiding the way through the astral wilderness. This painting reflects the infinitesimal joined with the infinite, the microscopic mirrored in the macroscopic, and reminds us that within the boundless dark, there is always light to be found.

22. *Phytoniquen magnivorans*



"*Phytoniquen magnivorans*" unfurls a panorama where the vitality of the natural world converges in an opulent feast for the senses. This landscape of growth captures the vigor of the wild in an intertwining dance of color. The labyrinth of strokes draws the eye across a fertile expanse, reminiscent of fields viewed from great heights, revealing nature's complex patterns. Dusky purples and twilight blues dominate the canvas, warmed by the golden glows and sunset pinks of a day's joyful close. This painting, the great eating light, transforms sunbeams into sustenance, honoring the ceaseless cycle of photosynthesis, the silent, splendid alchemy that fuels the heartbeat of the earth.

23. *Caelumbrassa mirificus*



"*Caelumbrassa mirificus*" unfurls across the canvas in a cosmic ballet of intertwined violaceous tendrils and stellar flora, capturing the ethereal essence of a nebula's birth. The chaotic beauty of cosmic dust clouds is translated into the delicate language of botanical life. The interplay of lines and colors mimics the dynamic motion of gases and particles in space, each stroke a delicate filament of light caught in the gravity of artistic expression. Flecks of white and soft pink act as stars born from the nebulous chaos, illuminating the dark reaches of the canvas with bursts of luminescence. This painting reveals a deep connection between the cosmos and the patterns of growth and bloom found in nature.

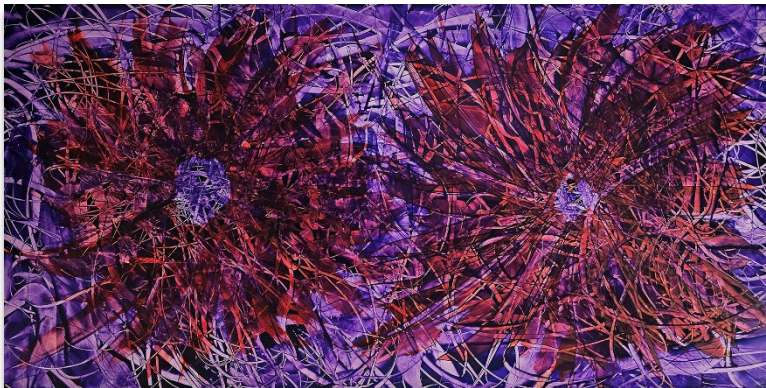


24. ***Floraclysm refugea***



"*Floraclysm refugea*" captures the tragedy in Gaza, Palestine. The canvas resonates with the stark contrasts of conflict—deep blues and haunting shadows underscore pervasive despair, while vivid bursts of orange echo the violent destruction scarring the night sky. Thorns twist, sharp and tangled, symbolizing the pain and entrapment endured by the inhabitants, especially the children. Their innocence, besieged by war, is tangled in thorns that both protect and wound. Every brushstroke is laden with urgency, speaking to the complexity and heartache of the conflict. This painting is a profound lament for the senseless loss of young lives, a poignant reminder of resilience in the face of overwhelming adversity.

25. ***Spectraflora*** *extinctus*



"*Spectraflora extinctus*" unfolds as a haunting tribute to the vanishing of countless plant species. Deep purples and blues churn with fiery reds—final bursts of life fighting extinction. Twisting forms and chaotic color echo a disrupted natural order, where beauty once thrived unseen. Shadows collide with light, evoking the fragile line between vitality and loss. Thorns and brushstrokes spiral in a dance of defiance and despair, mirroring nature's tangled struggle to endure. This painting is a visceral elegy and a warning—an urgent call to protect what remains before more wonders are swallowed in the silence of irreversible ecological collapse.

26. ***Cyclonopetalum mirabilis***



"*Cyclonopetalum mirabilis*" captures the untamed spirit of a botanical whirlwind. Deep purples and rich magentas dance with fiery reds, contributing to a dynamic visual cyclone that draws the eye into its vortex. The wild, twisting forms mimic the chaotic yet purposeful patterns of wind in a storm. This botanical tempest symbolizes the powerful life force and relentless growth in nature, reflecting resilience and beauty thriving even in turbulent environments. Amidst the whirlwind, delicate details suggest the fleeting beauty of flowers caught in a gust, bending and swirling in a natural ballet of survival and adaptation. This painting celebrates raw, elemental power, an ode to the exquisite order found within apparent chaos.



27. ***Substratafolia forestalis***



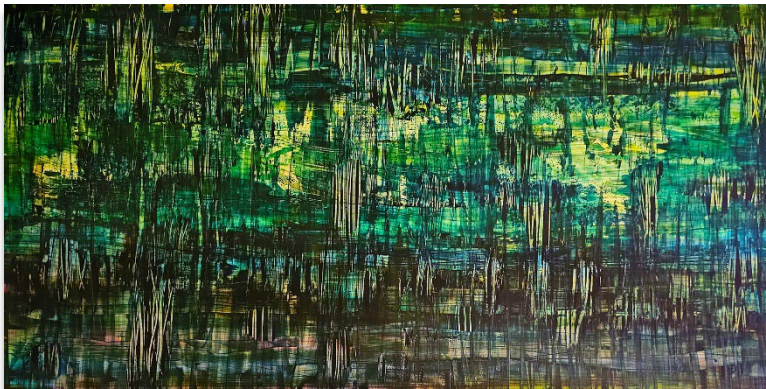
"*Substratafolia forestalis*" vividly captures the dynamic decay of the rainforest floor. Earthy hues—deep maroons, muted purples, and rich browns—mirror the natural decomposition process, diving into the intricate dance of fungi, insects, and decomposing organic matter. Bursts of warm tones in the composition's center evoke the frenetic activity of decomposers, while cooler shades of blue and deep violet encircle this vibrant core, suggesting the moist, shadow-draped undergrowth. This painting is raw, echoing the coarseness of rotting wood and the spongy textures of bark, mosses, lichens, and fungi.

28. ***Pluvialis spectratum***



"*Pluvialis spectratum*" unfolds as a vivid abstraction of a rainforest deluge, capturing the relentless surge of growth and decay in pulsating strokes and water falling through dense foliage. Vibrant greens, from the electric hues of fresh leaves to the deep, shadowed tones of an ancient forest, intermingle with bursts of indigo and charcoal, adding depth and mystery. Streaks of white and hints of pale yellow pierce through thick canopy layers, illuminating patches of the undergrowth. This painting brims with kinetic energy, mirroring the chaotic yet inherently ordered rhythms of the natural world.

29. ***Hydraphylla serenus***



"*Hydraphylla serenus*" offers a vivid abstraction of a drenched forest, where water and flora merge into fluid green and blue hues. It is a dynamic, aqueous landscape of intermingling colors that echo the gentle flow of woodland streams. Above, bursts of emerald and jade, streaked with deep blue and hints of ivory, mimic light filtering through a dense canopy, evoking the shadowed depths of a forest pool or submerged plant life. The brushstrokes intersect and blend, creating a rhythmic pattern resembling rain cascading down tree trunks and moisture-laden leaves. This painting captures the forest's vibrant yet tranquil essence, symbolizing the vital waters that nourish the woodland realm.



30. ***Incendiarboris foliate***



"*Incendiarboris foliate* " delves into the metaphysical interplay between creation and destruction, life, and decay. This work encapsulates the raw, primal forces that both forge and devastate existence. The colors clash and converse, symbolizing the eternal battle between growth and annihilation. They bleed and blend, mirroring the uncontrollable, often violent transformations in nature. Vigorous palette-knife strokes evoke the physicality of these processes, capturing flames consuming a forest or new life bursting from ash. This painting contemplates the cyclical nature of existence, where destruction paves the way for growth, chaos fertilizes order, and the remnants of the old serve as the foundation for the new.

31. ***Verdevertex symbiotica***



"*Verdevertex symbiotica*" is a captivating fusion of tangled lines against a backdrop of luminous goldens and deep turquoise greens, articulating the metaphysical idea of interconnectedness, how seeming chaos on the surface masks an underlying symmetry that mirrors nature's complexities. Sharp flashes of yellow break through the dense network of green, symbolizing moments of clarity and insight into life's hidden structures. This piece is a metaphysical exploration of the interconnectedness essential for the survival of an ecosystem, visualized through vibrant interlacing lines symbolizing symbiotic relationships within a forest. It offers a meditation on the harmony found amidst disorder, inspiring deeper inquiry into the universal forces orchestrating existence.

32. ***Chlorospiralis fluxiphylla***



"*Chlorospiralis fluxiphylla*" plunges the viewer into a mesmerizing expanse of deep greens, its myriad shades unfolding in layers that echo the lush, intricate strata of a rainforest. Each stroke and splash is artfully layered, capturing the wild profusion of the tropics. This painting embodies both chaos and meticulous structure, invoking the concept of "hidden order," where every leaf and tendril intertwines in a dance of ecological and existential symbiosis. It is a profound contemplation on our reciprocal relationship with the natural world, urging us to consider our role within this vast network of life.



33. ***Sanguinolentus intricarpus***



"*Sanguinolentus intricarpus*" embodies the stark realities of Gaza, where the vibrancy of life is shadowed by the darkness of conflict. Deep, bleeding reds depict the turmoil and suffering endured by its people, especially the innocence of children caught in unending strife. This artwork compels viewers to confront the harsh juxtaposition of life and devastation, capturing raw emotion and resilience amidst chaos. Chaotic swirls and stark contrasts portray a landscape torn by violence, acting as a visual scream echoing the cries of the oppressed and the heartache of a ravaged land. This piece is not just an artistic expression but a dramatic call to witness, understand, and respond to the plight of those in Gaza, reminding us of the resilience and suffering in the face of destruction.

34. ***Tenebrosa regenerans***



"*Tenebrosa regenerans*" unveils a metaphysical theater where serpentine forms dominate the canvas, symbolizing the transformative process of shedding and renewal. Dark, fluid lines intertwine with vivid bursts of red, embodying the perpetual cycle of rebirth akin to snakes shedding their skin. This act of renewal serves as a powerful metaphor for existential regeneration and the inevitable transformation accompanying growth. This painting not only explores the physical act of molting but also probes the philosophical implications of evolving beyond former selves, encouraging viewers to embrace the fresh possibilities that arise from the ashes of the past.

35. ***Pelagophyton cyclipetalum***



"*Pelagophyton cyclipetalum*" is set in the sea, where spirals and swirls evoke the cosmic dance of creation and dissolution through mesmerizing hues of deep blues and whites in an oceanic abyss. This painting captures the endless swirl of life's currents, with each stroke resonating with the rhythmic pulse of the sea. The darker blues dominate the canvas, speaking to the unfathomable depths of both the ocean and space, rich with mystery and beyond human reach. It invites viewers to plunge into the metaphysical depths of its composition, exploring the intertwining of cosmic and aquatic realms. This piece is an exploration of how life's forms, though seemingly chaotic, follow a sublime order.

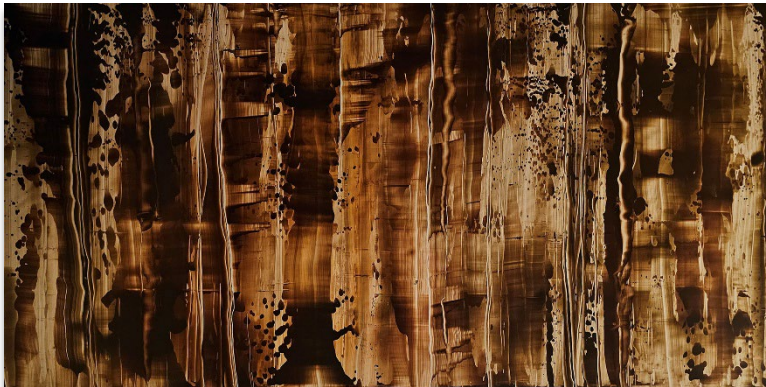


36. ***Incendiaris foliate***



"*Incendiarboris foliata*" plunges into the fierce clash of creation and destruction. Vivid red, deep orange, brilliant yellow, and profound greens symbolize life's primal forces. These colors clash and blend, representing growth's eternal battle with annihilation. Vigorous palette-knife strokes evoke flames consuming forests and new life rising from ash. The painting contemplates existence's cycle, where destruction breeds growth, chaos fertilizes order, and the old fuels the new.

37. ***Solumbrunneus profundum***



"*Solumbrunneus profundum*" delves into the earth's innermost layers, capturing a world where earthworms play a pivotal role beneath the surface of decaying leaf litter; processes of decomposition and renewal, emblematic of earthworms' subterranean activities as they aerate the soil and enhance fertility. Shades of umber, sienna, and charcoal echo the natural aging of buried materials, where life thrives unseen. Vertical flows suggest the slow, transformative drip of time, while lighter bursts amid darkness indicate the presence of life and vital chemical interactions. This painting meditates on the unseen layers of life and transformation, emphasizing the profound interconnectedness of all forms of being—from the microscopic to the cosmic.

38. ***Foliumsubter coloratus***



"*Foliumsubter coloratus*" is an ode to the unseen laborers of the natural world, the myriad insects beneath the leaf litter. Scarlet and amber hues intertwine with deep, earthy tones, capturing the chaotic beauty of the forest floor's life. Each stroke and splatter evoke the frenetic activity of these small beings, whose tireless efforts recycle nutrients and aerate the soil, sustaining the ecosystem's vitality. The layered colors and textures suggest the soil's depth and density, teeming with ceaseless activity. This painting reflects the symbiosis between the seen and unseen, honoring the small yet mighty forces that mold our environment and urging us to respect the delicate balance maintained by earth's tiniest denizens.

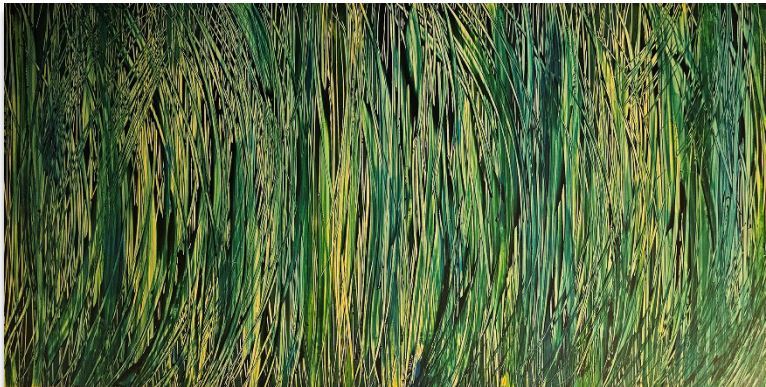


39. *Virens obscuroides*



"*Virens obscuroides*" unveils a mystical expanse deep within a tropical rainforest, where thickets and thorn trees form a labyrinthine haven of secrets. Rich greens and mysterious blues interlace, creating a dense, impenetrable texture that speaks to the complexity of these hidden places. Each brushstroke builds an intricate mesh of foliage, both barrier and sanctuary, guarding the sacred mysteries of the natural world. Thorn trees, with their sharp branches, add a sense of resilient beauty and danger, embodying the dual nature of the rainforest as a place of life and perilous defenses. These natural fortresses symbolize the deep, often untouchable layers of existence they protect, echoing the eternal dance between concealment and discovery.

40. *Aequorealis viridescens*



"*Aequorealis viridescens*" plunges the viewer into a visual symphony of nature's ceaseless movement. The painting unfolds a torrent of slender, vertical strokes reminiscent of grass or reeds swaying under a tempestuous wind. Colors transition from aquatic blues and vibrant teals to vivid greens, reflecting life's perpetual transformation. Each stroke builds upon the next, creating a profound sense of depth and dynamism, evoking unseen currents steering the natural order. This artwork symbolizes the intricate web of connections where entities influence and adapt in response to one another.

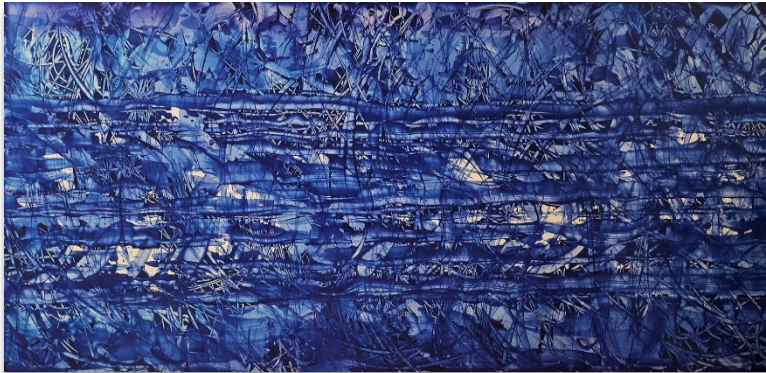
41. *Chasmaphyton lignum*



"*Chasmaphyton lignum*" captures the profound essence of a forest's life cycle, spotlighting the interstices within and between fallen trees. The painting's texture, form, and rich sepia tones echo the rough surfaces and jagged lines of tree bark, while subtle color variations suggest shadowy depths. Each stroke articulates the quiet decay and dignified collapse of timber, transforming gaps into vital spaces of life and regeneration. This artwork explores the often-overlooked spandrels of the natural world—unnoticed dents and voids serving as crucial ecological niches. It reflects on the unseen roles these gaps play, emphasizing their importance in life's continuity and ecosystem resilience.

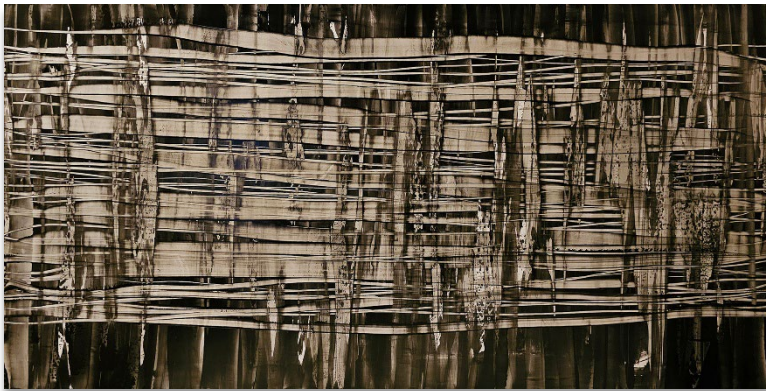


42. *Abyssopetala azurea*



"*Abyssopetala azurea*," in shades of indigo and cobalt, evokes the vast and mysterious depths of oceanic waters. The canvas captures the fluid dynamics of aquatic forces, with brushstrokes channeling the relentless power and gentle caress of the sea. The rhythm of waves, their rise and fall, and the swirls and eddies speak of water as a life-sustaining force. Deep layers of blue conjure images of underwater currents sculpting the seabed and guiding marine life. Light interplays with shadows to mimic the shimmering surface seen from below, intertwining metaphysical questions with elemental forces. This painting invites contemplation on life's fluidity, unseen currents, and the deep, unexplored layers of existence that connect us all.

43. *Lignum laceratum*



"*Lignum laceratum*" presents a stark visual metaphor from the devastation of Hurricane Maria in 2017, which stripped trees in Puerto Rico of their bark and branches but left their resilient cores exposed. The painting captures the dramatic contrast between destruction and the tenacious grip on life, with dark, torn textures overlaying the stubborn underlayers that refuse to yield. This work delves into the essence of resilience and regeneration, portraying scars and striated textures reminiscent of bark violently torn but not defeated. It evokes the deep wounds inflicted by the storm while hinting at underlying strength and survival. This piece explores nature's ability to withstand and evolve through adversity, posing questions about endurance and the inherent power of natural entities to transcend disturbance.

44. *Cicatrix sylvae*



"*Cicatrix sylvae*" delves into the anatomical intricacies of forest wood, focusing on the technicalities of tree bark and its internal layers. The artwork vividly captures the rugged periderm and the underlying sensitive vascular tissues—phloem and xylem. Streaks and textures mimic the cambium's complex growth patterns, while tannic hues and layered brushstrokes emphasize the bark's striated texture and fissures from environmental stress. This painting transcends a botanical study, embodying resilience and regeneration. It portrays the silent, vigorous persistence of forest life, continually renewing itself amidst adversity and decay.



45. ***Arboris armature***



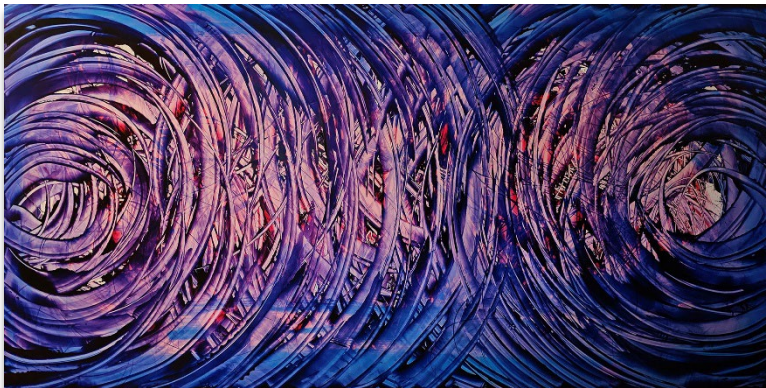
"*Arboris armature*" plunges the viewer into a contemplative exploration of bark and its essential role as a guardian of life within the forest's heart. Bark is depicted as a storied parchment, recording the relentless passage of time and nature's silent resilience. The textured streaks across the canvas symbolize the endless struggle against environmental adversities, each mark a testament to survival and defiance. This painting evokes the complexity and robustness of bark, portraying it as the shield between the harsh external world and the delicate lifeblood of trees, highlighting the profound strength found in nature's defenses.

46. ***Sclerisecantia serrulatae***



"*Sclerisecantia serrulatae*," drenched in primal hues of earth and shadow, captures the unyielding essence of razor grass flourishing in the ruins left by a hurricane. This piece is a metaphysical meditation on survival and resilience, with stark, sinewy lines echoing the aggressive proliferation and serrated edges of razor grass. It probes deep into the philosophical tenets of nature's unstoppable force, illuminating the fierce reclamation of life amidst devastation. Contrasting textures abound, with deep, bruise-like colors portraying the hurricane's scars, and silvery streaks mimicking tenacious grass blades. Each brushstroke reflects nature's rhythmic dance, where chaos breeds new order and ruin brings regeneration.

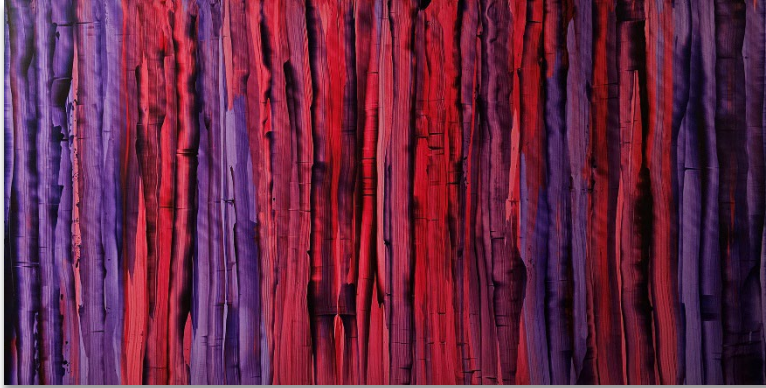
47. ***Locus coeruleum***



"*Locus coeruleum*" is a dynamic exploration of movement and emotion through a kaleidoscope of blues, symbolizing the depth and turbulence of the subconscious. Swirling patterns dive into the mind's quieter, often overlooked spaces, reflecting the locus coeruleus, a brain region crucial in stress and panic responses. The composition meditates on the fluidity of thoughts and feelings, with intertwining layers that spin indefinitely. Each stroke and shade of blue portrays different aspects of mental activity, from calm introspection to whirlwind anxiety. This painting delves into the forces driving our emotional responses, revealing the deeper currents beneath perceived calm.



48. ***Mutatio perpetua***



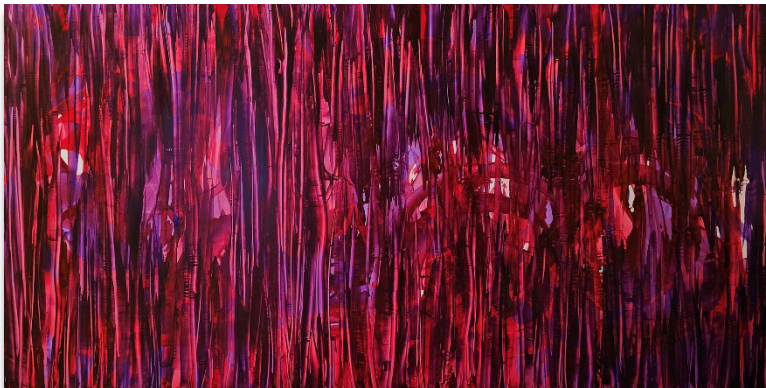
"*Mutatio perpetua*" captures the world as an eternal flux of interconnected energies, painted in a spectrum that pulses with life's ceaseless evolution. Hues of crimson and violet cascade across the canvas, shifting like currents in an unseen river of life. These colors interact, challenge, and change each other, symbolizing the dynamic processes of transformation that define existence. This painting is a metaphysical exploration of the universe's perpetual motion, where every stroke and pigment reflects the rhythm of change, emphasizing the fundamental truth that nothing is static and everything is part of a larger metamorphosis.

49. ***Lignoterranea termitalia***



"*Lignoterranea termitalia*" transforms the hidden world of termites into a mesmerizing exploration of creation through destruction. It abstractly depicts the intricate tunnels and chambers carved by these relentless architects, whose unseen labors transform robust wood into fragile labyrinths of life and decay. A palette of fiery reds and deep purples captures the vibrant energy beneath the surface. This painting serves as a metaphor for the unseen forces shaping our realities, reminding us that destruction can create new forms of existence. The termite, reimagined, becomes a vital participant in the cycle of ecological transformation.

50. ***Rubriflorus sanguineus***



"*Rubriflorus sanguineus*" is a visceral tapestry of life's essence, capturing the fluidity of blood coursing through veins. Crimson and scarlet merge with deep purples, evoking blood's vitality and indispensable role. It serves as a metaphoric curtain, revealing glimpses of past lives and distant memories. Layers of history intertwine, creating a collective narrative. Sporadic bursts of white symbolize fleeting moments when past traumas and joys pierce through time, encapsulating the persistence of memory, where the past, though often obscured, remains integral to the present.



51. ***Fractilignum resilientis***



"*Fractilignum resilientis*" embodies the resilience of trees facing hurricanes. Layered, undulating purples evoke the bruises and healing of nature's giants. Strokes and textures symbolize their strength—bending, fracturing, but never breaking, bearing scars yet standing firm. This painting tells a story of endurance and life's persistence through adversity, reflecting on nature's cycle of destruction and regeneration. It highlights the incredible capacity to adapt, overcome, and thrive.

52. ***Aquamira caeruleopulsa***



"*Aquamira caeruleopulsa*" evokes the mesmerizing stillness of a deep ocean descent. Layer upon layer of cerulean, indigo, and cobalt ripple with glimmers of pale light and sudden crimson—like pulses of memory or distant lifeforms drifting in the abyss. This painting captures the seductive quiet of submersion, where gravity loosens its grip and thought dissolves into fluid abstraction. The horizontal bands suggest tectonic calm and slow-motion movement, a world untouched by time. In this aquatic realm, the line between serenity and surrender blurs—a suspended moment between breath and oblivion, inviting the viewer to lose themselves in the blue's infinite embrace.

53. ***Umbracala sylvaticus***



"*Umbracala sylvaticus*" bursts with chaotic energy, its tangled lines and convoluted forms evoking a cartoonish wilderness. The vibrant textures seem to animate, creating a playful yet emotionally complex scene. This dense thicket distorts reality with whimsy and exaggeration, humorously yet poignantly reflecting the wild growth of a forest. Entangled branches and leaves form a labyrinth of feelings, showcasing the multifaceted nature of emotions in an intricate dance of expression.



54. ***Chartreusea malachitensis***



"*Chartreusea malachitensis*" is an abstract vision of an enchanted forest, where greens—from deep malachite and viridian to vibrant chartreuse and lime—create a whimsical dance of nature. Each stroke tells a story of wild, unpredictable beauty, as pigments frolic and intertwine to form lush, untamed patterns. This painting invites you to explore a fantastical realm where the earth speaks in a kaleidoscope of greens, blurring the lines between reality and imagination.

55. ***Undarum cantus***



"*Undarum cantus*," meaning "The Song of Waves," evokes the rhythmic power and fluidity of water. Visually, it could be represented as swirling, flowing patterns resembling oceanic currents, deeply connected to nature and chthonic elements. Metaphorically, it symbolizes harmony within chaos, the constant movement of life, and the primal energy of change. The waves sing of change, constant motion, and the undercurrent of time that moves all things, echoing through both the visible and the hidden worlds.

56. ***Pyrocanthus flammeus***



"*Pyrocanthus flammeus*" presents a vivid depiction of raw, emotional intensity, skillfully held in balance by the artist's disciplined technique. Its dense, tangled brushwork in fiery reds and deeper crimson hues mirrors a furious inner turmoil, akin to a raging storm contained or caged within the bounds of the canvas. The message conveyed is profound—a visual metaphor for harnessing one's fury constructively. Rather than unleashing destructive energy on others, the painting advocates for channeling such power into creative expression. It captures the essence of facing inescapable anger and transforming it into something that, while still intense, is controlled and purposeful, echoing the resilience and adaptive strategies one must adopt in life's confining trials.



57 ***Umbracala profunda***



"*Umbracala profunda*" features a dense web of twisting, dark forms, resembling tangled roots or vines. The monochromatic tones create depth and draw the viewer into a chaotic but deliberate swirl of organic shapes. Metaphorically, the painting suggests a descent into hidden realms, with its title evoking deep shadows. The intricate forms represent the chthonic, where unseen forces and tangled connections lie buried, hinting at the complexity and mystery beneath the surface of nature.

58 ***Abyssus azurea***



"*Silvae caeruleae*" features deep streaks of blues, ranging from cobalt to indigo, resembling flowing water or dense tree trunks. Lighter patches break through, suggesting glimpses of light amidst the darkness. The textured brushstrokes evoke movement and stillness, like a misty forest or cascading rain. Metaphorically, the painting explores hidden depths, embodying the subconscious or the unseen forces of nature. The contrast of light and dark suggests the tension between life and decay, revelation and mystery, with the blue tones evoking chthonic themes of the earth's ancient, subterranean layers.

59 ***Vitex cognitisomnium***



"*Vitex cognitisomnium*" represents the ceaseless dance between the conscious and the subconscious realms. The bold, fiery red strokes embody the vivid, palpable thoughts and emotions of our conscious mind, fiercely cutting through the serene blues that symbolize the enigmatic, shadowy depths of our subconscious. Where these colors collide and blend, they manifest a tumultuous yet sublime battleground of intuition and buried insights surging into the realm of awareness, underscoring a profound and ceaseless dialogue within our psyche. This powerful visual metaphor captures the relentless, dynamic interplay that shapes our perception of self and reality, highlighting the intricate, often volatile fusion of awareness and instinct that defines the human experience.



60

***Rubus psychae***

"*Rubus psychae*" is a vivid exploration of metaphysical concepts, rendered through an intense red palette and chaotic textures, which I see as symbolizing the primal forces of existence and the raw essence of life. The tumultuous patterns could represent the complex layers of human consciousness, where thoughts and existential dilemmas intertwine, suggesting a deep struggle to understand truths beyond the physical realm. To me, it serves as a visual metaphor for the Jungian collective unconscious, tapping into universal symbols that resonate on a subconscious level and challenging us to contemplate the unseen forces that shape our reality and delve into the depths of the human psyche.

61

***Aequilibrium ruptum***

"*Aequilibrium ruptum*" portrays a primal clash between red flame and deep blue water—creation and destruction locked in an endless struggle. Swirling, fractured forms suggest a shattered balance, where opposing forces surge and recede, inseparable within the cycle of existence. This elemental battle echoes the aftermath of storms like Hurricanes Helene, Milton, and Maria, which rupture landscapes and minds alike. The painting reflects how resilience and trauma are intertwined, born from the same upheaval. In the wake of catastrophe, we are altered—forced to confront the volatile beauty of nature and the fragile illusion of stability that once held us in place.

62

***Filamentaspiralis silvestris***

"*Filament silvestris*" invites reflection on the interconnectedness of all things—each spiral and tangle echoing nature's fractal patterns and the layered depths of human consciousness. Luminous threads emerging from shadow suggest an inward journey, where the material and spiritual converge. This piece becomes a meditation on resilience, transformation, and the intricate beauty of entangled existence. It honors the unseen forces that bind life together, revealing how light can arise from darkness. Both metaphysical vision and an organic abstraction, the painting explores the infinite, spiraling rhythms of creation and destruction that shape the forest, the self, and the cosmos.



63 ***Lacrimae gazae***



"*Lacrimae gazae*" is my reflection of the ongoing genocide in Gaza, Palestine. I am seeking to capture the unbearable weight of human suffering, destruction, and loss. The blood-red hues and jagged, violent textures evoke the relentless violence that has devastated countless lives, reducing entire communities to silence and despair. As the cries of the innocent go unheard, this work serves as both a witness and a call to recognize the profound injustice and cruelty of the atrocities being committed, urging us not to look away.

64 ***Umbracala rupturata***



"*Umbracala rupturata*" evokes a realm of chaos and rupture—an entangled forest of shadow, torn and unsettled. Monochromatic layers of black, gray, and white conjure the eerie stillness of a forest fractured, where natural order has been violently undone. Spirals, tendrils, and jagged forms collide in explosive motion, resembling twisted roots, shredded leaves, and fragmented bark. The composition is dense and volatile, a portrait of a broken ecosystem in flux. Metaphorically, the painting speaks to disintegration and transformation—a collapse of equilibrium where creation and destruction coalesce. It invites us to witness the strange, fractured beauty that emerges from the heart of upheaval.

65 ***Ignisundula filamentis***



"*Ignisundula filamentis*" captures a symphony of tension where form dissolves into formlessness. Deep chthonic blues swirl into a vortex, serene yet chaotic, while crimson tendrils erupt like fire mid-dance, breaching the boundaries of silence. Vertical threads, like sentinels or veins of energy, frame this space, where liquid light flows with violent intensity yet rhythmic harmony. It reflects an eternal struggle: fire and water, movement and stillness, light and shadow. A moment of collapse and rebirth, it confronts the viewer with the sublime and unknowable. To look at this painting is to glimpse the hidden scaffolding of reality, the place where beauty burns brightest just before it vanishes into darkness.



66 *Caelothrix umbralis*



"*Caelothrix umbralis*" celestial threads of shadow—bridges the unseen forces of life with the visible patterns they produce, much like the ancient cyanobacterium *Calothrix*, silent architects of ecosystems. Vertical filaments ripple through light and darkness, evoking roots, reeds, or neural paths, and suggesting a liminal zone where chaos and order converge. Beneath the surface lies a fractured, vibrant world—both veiled and revealed. The painting invites introspection, portraying existence as fragmented yet unified, grounded yet ascending. Repeating forms become meditative, like thoughts winding through a labyrinth. It is a portal as much as a boundary, drawing the viewer into layered realms of perception.

67 *Cyclofracta somniferum*



"*Cyclofracta somniferum*" draws the viewer into a hypnotic spiral of flux, where perception bends and boundaries dissolve. Sweeping arcs and intersecting lines radiate from an unseen core, suggesting gravitational pull, cosmic drift, and the unraveling of form. Hues of molten gold and ember-red ignite against cooler tones of slate and smoke, forging a dynamic tension. The composition pulses with latent motion, suspended between eruption and quietude. It suggests a dream-state of dissolution and becoming—a visual echo of elemental cycles. Here, dissolution is not destruction but transformation, a quiet surrender to forces vast, unknowable, and beautifully indifferent to human control.

68 *Vinea insanialuminis*



"*Vinea insanialuminis*" spirals into the metaphysical terrain of ecstatic disorder, where madness is not a rupture but a threshold. Vines writhe in iridescent purples and electric blues, conjuring an alchemical space between light and delirium. This tangled field of forms mirrors the psyche unraveling—where the boundaries between perception and reality dissolve, and clarity flickers like bioluminescence in shadow. It is a forest of the mind, where beauty and chaos are indistinguishable, where entrapment becomes transcendence. The work invites surrender to complexity, a luminous madness that doesn't destroy—but reveals—the infinite interconnection of all that lives, dreams, and spirals toward knowing.



69 **Orbis ignivivens**



"*Orbis ignivivens*" speaks to the universal truth of interconnectedness: that all things, though seemingly distinct, are bound by a shared rhythm of transformation. It is a visual reminder of the profound interdependence of opposites, the eternal dance of light and dark that shapes our understanding of existence. The glowing orb at its center becomes a microcosm of the cosmos itself—a perpetual interplay of energy, igniting creation while simultaneously embracing dissolution. The painting invites the viewer to see beyond surface dualities, to grasp the unity hidden within apparent chaos, and to reflect on their own place within this vast, cyclical continuum of life and energy.

70 **Zephyra striatalis**



"*Zephyra striatalis*" swirls across the canvas like a symphony of wind and water, embodying the essence of celestial currents caught in an ocean's embrace, evoking the gentle, powerful currents of air weaving through the boundless stratosphere. The texture of the paint itself mirrors these natural forces, with sweeping, layered strokes that ripple like wind-swept water and atmospheric turbulence. Thick ridges of pigment create the impression of tangible waves breaking against unseen barriers, while finer, wispy lines suggest the fleeting touch of air currents in motion. This painting is a portal to the realm where the heavens meet the sea.

71 **Umbracala obsidianis**



"*Umbracala obsidianis*" is an invocation of the underlayer, the shadow realm of growth, memory, and decay. The painting reads as both vegetal and visceral, a tangled archive of what lies beneath conscious perception. Root-like tendrils, looping and slicing, suggest the silent intelligence of forests, the places where light does not reach, but life persists—feral, ancient, and unrepentant. There's a philosophical unease in this work—the reminder that civilization builds itself above something it cannot fully control or even name. This piece is that unnameable. It is entropy entwined with order. It is the scream of the root when no one is listening. It is what lies beneath reason. And perhaps that's the point—the painting does not ask to be understood. It asks to be witnessed.



## Bio:

**3t Vakil** is a Performance Scientist & Research Artist, and the President of Tropic Ventures Research & Education Foundation at *Las Casas de la Selva*, a sustainable forestry and rainforest enrichment project in Patillas, southeast Puerto Rico, where she has lived for over two decades. A Director of the Institute of Ecotechnics, 3t's expertise spans ecology, expeditions, and the arts, with significant contributions to coral reef research and marine expeditions across the Red Sea, and Indian Ocean. In 2015, 3t co-founded Puerto Rico Hardwoods, pioneering efforts to salvage valuable hardwoods post-Hurricane Maria, thereby converting potential waste into sustainable resources. 3t's artistic expression is deeply influenced by her life in the rainforest and work in sustainable forestry, conservation horticulture, and botany, which includes a collaboration with Botanical Gardens Conservation International (BGCI), on the conservation and recovery of several critically endangered endemic species. As a Fellow of the Linnean Society, and the World Academy of Art & Science, 3t's work exemplifies the fusion of art and science. Her innovative efforts were recognized in 2021 when she received an Innovation award from Yale University's International Society of Tropical Foresters.

## More about the process:

My life and work are steeped in the exploration of natural environments, philosophical inquiry, and artistic expression. My unique journey has taken me from the depths of the world's oceans to the dense foliage of rainforests, experiences that profoundly shape my distinctive artistic voice. This series, "Spandrel Spaces: The Art of In-Between," is a compelling culmination of these explorations, inviting viewers to reconsider the spaces that exist between more commonly observed subjects. My three years as a diver researching coral reefs have endowed me with a profound connection to the underwater worlds, whose ephemeral beauty and complex biodiversity are echoed in the fluid, organic forms of my artwork. After settling in the rainforest of Puerto Rico, I have dedicated over twenty years to scientific research, conservation horticulture, sustainable forestry, and botany. These experiences do not merely inform the content of my art; they are woven into every work. My lifelong studies in philosophy, metaphysics, and consciousness further deepen the layers of meaning in my work - always moving towards deeper understanding and representation of the unseen and underappreciated aspects of the human psyche and the natural world. My artistic trajectory mirrors my physical and intellectual journeys—In "Spandrel Spaces: The Art of In-Between," I focus on the architectural concept of the spandrel: the spaces between arches and above doorways, often overlooked but brimming with potential. By paralleling these architectural elements with the often-ignored spaces in nature, I elevate these interstitial areas to a place of prominence. My technique is an active dialogue with the muse; it's a deliberate orchestration of space and spirit, preparing for the sacred arrival and cherishing her ethereal presence. I describe my approach as a visceral dance, a total immersion of body and soul into the creation process. Armed with paint, brushes, palette knives, pieces of wood, the pads of my fingers, even a machete, I move with primal intuition, and engage in a rhythmic ritual of dance, drawing, scraping, and sculpting, the canvas sprawling before me as a vast, responsive arena.

The pace at which I work mirrors a shamanic trance, each stroke and gesture unfolding in a revelatory performance. This spontaneous interplay with my materials forms the cornerstone of my repertoire where ordinary motions are alchemized into visual sorcery. In this sacred exchange, I honor the muse, allowing her to wield my hands, while I step aside, a conduit for her will. I try not to draw what I know. Thus, the immediacy of my actions becomes not just a method but a spiritual guide in the creation of each piece, where the act of making is as significant as the art itself.

**3t Vakil, 2025**